

Oceanspace™ S5500T/S5600T/S5800T/S6800T T-Series Storage System



Huawei Symantec

Scalable Mid-Range Storage System



Oceanspace T-Series

High Performance and Highly Scalable Midrange Systems

Mid-Range Enterprise Storage that drives down cost of ownership

The explosive growth of data is causing IT infrastructures to consolidate their systems to improve the methods by which they store, manage, and protect their data. Consolidation of IT infrastructure demands new high performance, scalable, and reliable storage architecture.

Huawei Symantec's Oceanspace™ T-Series (S5500T, S5600T, S5800T, and S6800T) is the next generation of highly scalable storage designed to meet the requirements of today's sophisticated mid-range storage market, offering new levels of storage performance, scalability, and reliability. The T-Series is the scalable storage system that consolidates and manages up to 3PB of data in a single simplified management.

Modularity for the enterprise SAN infrastructure

The T-Series provides you with highly modular, and high port density Fibre Channel and/or iSCSI connectivity modules to seamlessly fit into your existing SAN infrastructure.

Scaling Capacity and Performance

The T-Series is built using a unique SmartCache performance accelerated architecture to provide maximum IOPs performance and comes with 10 Gigabit Ethernet for high throughput iSCSI networking connectivity.

The T-Series allows for flexible capacity expansion for easy growth up to 3PB within a single storage system.

Data Protection

The T-Series provides enterprise class reliability, best-in-class RAID protection, and is designed for high-availability with no single point of failure. The T-Series' non-intrusive backup and replication technology allows the users to experience uninterrupted high-speed access to their data. Productivity never suffers to accommodate a backup or replication window.

Unified Management

Simple, policy driven unified management that controls data protection, DR, system management and system energy efficiency.

HIGHLIGHTS

- Highly Scalable up to 3PB
- High Port Density
- High Availability
- Superior Performance 100,000 IOPs
- SmartCache to boost performance of mission critical business applications.
- iSCSI and/or FC SAN
- Unified Management
- Tiered Storage across FC, SAS, SATA, and SSD
- Advanced Data Protection and Disaster Recovery
- Energy Efficient Technologies

T-Series Controllers

Model	Size	Disks (Internal)	Disks (Scalability)
S5500T	2U	24	288 SSD, SAS, or SATA
S5600T	4U	NA	576 SSD, SAS, SATA, FC
S5800T	4U	NA	1,152 SSD, SAS, SATA, FC
S6800T	4U	NA	1,440 SSD, SAS, SATA, FC

T-Series Disk Enclosures

Model	Size	Disks per Tray	Disks (SSD, SAS, SATA, FC)	Max Capacity
DAE12425U2	2U	24	2.5"	7.2TB
DAE12435U4	4U	24	3.5"	48TB

T-Series Disk Modules

Model	Size	SATA HDDs	SAS HDDs	SSDs
DAE12425U2	2.5"	500GB 7.2K RPM	300GB 10K RPM 600GB 10K RPM 900GB 10K RPM	100GB
DAE12435U4	3.5"	1TB 7.2K RPM 2TB 7.2K RPM	300GB 15K RPM 450GB 15K RPM 600GB 15K RPM	100GB



Hardware Specification

Model	S5500T	S5600T	S5800T	S6800T
Storage Processor	64-bit microcore processor			
Number of controllers	2	2	2	2
System cache	8GB/16GB/32GB	24GB/48GB	48GB/96GB	48GB/96GB/192GB
Host ports	8Gb FC 1/10GE (iSCSI)		8Gb FC 1/10GE (iSCSI)	
Storage ports	SAS2.0 wide port	4Gb FC or SAS2.0 wide port		
Maximum IO modules	6	10	12	12
Maximum disks	288	576	1,152	1,440
Supported disk types	SAS, SATA, SSD	SSD, SAS, SATA, FC		

System Features

Model	S5500T	S5600T	S5800T	S6800T
Supported RAID	0, 1, 3, 5, 6, 10, 50			
Number of Host	512	1024	1024	1024
Number of LUNs	2048	4096	4096	4096
Number of Snapshots	1024	2048	2048	2048
Operating Systems	AIX, HP-UX, Solaris, Linux, Windows			

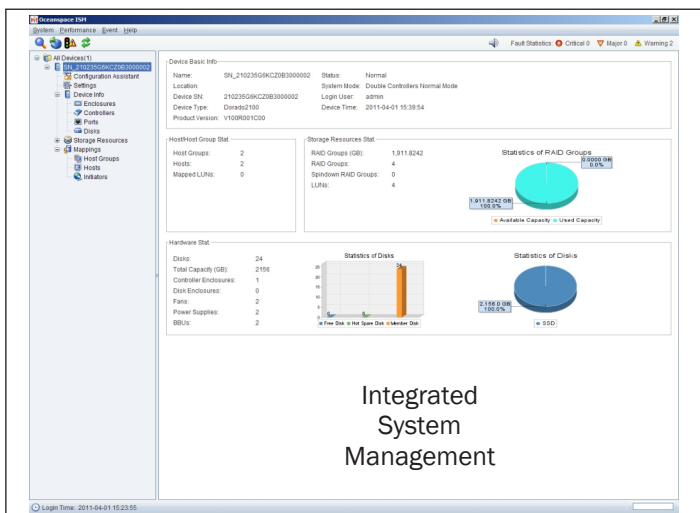
Physical Specification

Model	S5500T	S5600T	S5800T	S6800T
Size Control Enclosure	Height 582mm Width 446mm Depth 86.1mm	Height 502mm Width 446mm Depth 175mm		
Size Disk Enclosure	2U Disk enclosure (Height 412mm, Width 446mm, Depth 86.1) 4U Disk enclosure (Height 412mm, Width 446mm, Depth 175)			
Power Supply	AC: 100v ~ 127v or 200v ~ 240v DC: -48v ~ -60v			
Electrical power kva	4U disk enclosure with 24 600GB SAS : 550W			
Weigh Control enclosure	<=23.9Kg	<=43.6Kg		
Weigh Disk Enclosure	2U SAS Disk enclosure <=14.9Kg 4U SAS Disk enclosure <=25.2Kg	2U SAS Disk enclosure <=14.9Kg 4U SAS Disk enclosure <=25.2Kg 4U FC Disk enclosure <=24.9Kg		

T-Series



Software Specification



SYSTEM MANAGEMENT ATTRIBUTES

Integrated System Management	<ul style="list-style-type: none"> • Single pane of glass for all HS systems • RAID controller management • Disk sub-system management - Enclosures and disks • FC & iSCSI interface management
Standard management features	<ul style="list-style-type: none"> • Manage up to 512 systems • Replication management • Automated system configuration and backup • Policy-based management • Out-of-band Ethernet management network • Enhanced system monitoring and reporting
Management interfaces	<ul style="list-style-type: none"> • GUI based: HTTP, HTTPS • CLI-based: Telnet, Serial • Scripting: Allows for more user control
Secure management access	<ul style="list-style-type: none"> • SSL • SSH
Management access control	<ul style="list-style-type: none"> • User/Password authentication • Management port definition • Management access method
SNMP support	<ul style="list-style-type: none"> • SNMP • SNMP Traps

PROTOCOLS SUPPORTED

Network protocol support	<ul style="list-style-type: none"> • iSCSI • FC • NDMP • File Transfer Protocol (FTP)
Management protocols	<ul style="list-style-type: none"> • HTTP, SSL, SSH, SNMP • Email Alerts

SUPPORTED FEATURES

Standard Features:	<ul style="list-style-type: none"> • Centralized Management • SmartCache • Dynamic Traffic Control (DTC) • Server-free backup 	<ul style="list-style-type: none"> • Single pane of glass for all HS systems • Increase performance by migrating active data to SmartCache • Priorities process of host IO and array reconstruction traffic • Faster backup, releases server resources for other applications
Optional Features:	<ul style="list-style-type: none"> • HyperImage™ • HyperMirror™ • HyperCopy™ • DiskGuard™ • UltraPath • HostAgent™ • WORM file system 	<ul style="list-style-type: none"> • Allows fast recovery of data needed for compliance and/or DR • Synchronous or asynchronous remote replication of LUNs for DR • Full images of LUNs and changes to LUNs copied to another array • Continuously captures changed blocks of data and transfers them to a backup array • Fail-over, fail-back and load-balancing for high availability • User defined policies that trigger scheduled snapshot, remote mirroring or LUN copy • After data is written, LUNs can be set to Write Once Read Many (WORM) for read-only use and compliance



Huawei Symantec Technologies Co., Ltd.
 www.huaweisyntec.com
 The West Zone Science Park of UESTC, No.88, Tianchen Road, Chengdu, 611731 P.R.China
 Tel: 86-28-87897888 Fax: 86-28-87897788
 E-mail: USsupport@huaweisyntec.com